



# Fordland R-III School District

Education – An American Essential

Home of the Eagles

Richard Spacek, Superintendent of Schools

Judy Kindall, High School Principal

Vanessa Criger, Middle School Principal

Doug Crawford, Elementary Principal

Phone 767-4555

Phone 767-4554

Phone 767-2307

July 2010



## School Starts August 19, 2010

Fordland R-III will resume classes for the fall semester on August 19, 2010. Grades K-5 will start at 8:30 a.m. grades, 6-8 will start at 8:25 a.m. and High School (grades 9-12) will start at 8:32 a.m. The administration requests no students arrive at school prior to 8:00 a.m. Breakfast serving starts at 8:00 a.m.

Any student (grades K-12) who arrives after the tardy bell rings must report to the principal's office for an admit slip before going to class.



### School Breakfast and Lunches

Breakfast: Students-\$1.25 & Adults-\$1.50

Lunches: Students-\$1.75 & Adults-\$2.10. Those who qualify for reduced lunches will pay \$.40 for lunch and \$.30 for Breakfast. Milk will be \$.30.

### Free and Reduced Lunch Applications

We want to stress to our parents that all free and reduced information is highly confidential. Historically we have students who qualify for free or reduced price meals that do not apply because they feel the child will be embarrassed or it would be hurting the school. Those students who receive free and reduced go through the food line like everyone else. Only those persons who have a need to know (principal, secretary, etc.) will know. The district receives a larger reimbursement for the free and reduced meals. In addition, many appropriations to the school are based on the number of students qualifying for free or reduced price meals. The school actually comes out better on those students who do receive this important benefit. As to the principle involved, I would much rather see our local families benefiting from our tax dollars as to see the inner city absorbing more of our revenue. Please help our school and our children. Applications for free or reduced price meals will be sent home with all students the first

day of classes. An approved application must be on file before students are eligible to receive the benefits. Applications may be picked up from the principal's office starting August 2nd. If your child (ren) was on free/reduced lunches last year and you are not direct certified, you will need to fill out a new application at the beginning of each year. The application must be in the office within thirty (30) days after school starts.

**If students are not pre-approved, parents will need to send lunch or pay for lunch on the first couple of days of school.**

### ONCE AGAIN....

**ALL THREE BUILDINGS WILL BE UTILIZING COMPUTERIZED BREAKFAST/LUNCH SYSTEM THIS YEAR!**

### HOW DO STUDENTS PAY FOR LUNCHES?

Each student's name and relevant information will be listed on a data based computer program. Students on full pay or reduced price meals will bring their breakfast/lunch money in an envelope to be given to their classroom teacher. **Under no circumstances may charges build up past \$10.** Student's still owing money from last year will not be allowed to charge. You may pick up lunch applications beginning Monday, August 2nd so that you will be eligible the first day of school.

**The A La Carte will be cash only at the middle school and high school. Money cannot be transferred out of the lunch account for this food.** If you have any questions please call each building office.

### ALL MONEY SENT TO SCHOOL WILL BE DEPOSITED TO ACCOUNT

When money is sent to school for breakfast/lunches, all the money will be deposited to the student's account. EXAMPLE: Lunch cost is \$1.75 per day or \$8.75 per week. (Afternoon snack milk is .30 per or \$1.50 per week for all students). We will make refunds if a student moves from the district. Method of payment can be made weekly, monthly, quarterly, semester, or yearly. Parents can send one (1) check for all children in the family but need to specify on envelope how much goes to each child. We are asking all elementary parents to pay for six (6) full days the first time so your child will always have one (1) day credit to cover the next Monday's meal.

## REMINDERS

Please try to send your child's lunch money on Monday or the beginning of each week, with the correct amount for the meals. Full price lunches are \$1.75 per day or \$8.75 per week, reduced price lunches are .40 per day or \$2.00 per week, full price breakfasts are \$1.25 per day or \$6.25 per week, reduced price breakfasts are .30 per day or \$1.50 per week, and afternoon snack milk is .30 per day or \$1.50 per week. We will continue to send weekly reminders of account balances. If you have any question about the lunch program, please call the elementary office at 738-2223 or 767-2307.

## ATTENTION! –ELEMENTARY PARENTS

Buses will be loading and unloading from the east side of the Elementary School again this school year. In order to keep the children safe we are requesting all parents that transport their children to and from school do so from the west side of the school as they have in the past. Please drop off your children at the doors by Mr. Crawford's office, so they can check in with Judith. Due to congestion we ask you that you pull forward as far as possible. Please make sure that your child knows each morning before they come to school whether you are picking them up or if they need to ride the bus. This eliminates last minute changes.

## TRANSPORTATION

Bus routes are essentially the same as at the end of the past school year. If you are new to the district and need bus service, please call 767-2298 for route information. Routes are subject to change to balance route loads. Each driver will adjust his/her time schedule after the first few days of school. Students in grades 6-12 needing transportation to the middle and high school from town will meet Bus #7, Mr. Lawson at the caution light in town.

## EMERGENCY CONTACT INFORMATION

Information sheets will be sent home with your student on the first day of school. We ask that you please fill out your child's information sheet with phone numbers that you can be reached at in case of an emergency. If you do not have a home phone number, please list an emergency contact that we can call. Also, please do not forget to update your child's information sheet throughout the school year when you change phone numbers. **When filling out your child's information sheet, please remember to fill out the directions to your house section. It is sometimes really difficult for young children to explain to a bus driver how to get them home.**

Your child's teachers spend their day providing exceptional care and education that the Fordland

students need, deserve, and receive. With that in mind, grades will be updated each Wednesday by 8:00 a.m.

## CLOSED CAMPUS

Fordland Schools have closed campuses and lunch periods. Students are not allowed to leave school grounds or accept commercial food deliveries during school hours. Other types of deliveries are to be made to the appropriate principal's office.

**All visitors must check in at the principal's office.**

## PRESCHOOL/KINDERGARTEN REGISTRATION

Preschool and Kindergarten students new to the district or those that have not been screened should call to schedule an appointment for the screening. **The screening will be held during the day on August 5<sup>th</sup>.** You will need to call the elementary office at 738-2223 beginning on August 2<sup>nd</sup> and schedule your time.



## REGISTRATION INFORMATION

Students new to the district in grades K-12 can register by calling the appropriate school office beginning on August 9th. Please bring with you your child's social security card, their birth certificate and immunization record.

Students in grades K-5 should call the elementary office at 738-2223 or 767-2307 for enrollment or screening information.

Students in grades 6-8 may call middle school office at 738-2119 or 767-4554 for an appointment.

High school students new to the district or students wishing to make schedule changes may call the high school office at 738-2212 or 767-4555 for an appointment.

## ELEMENTARY ORIENTATION

Elementary Orientation will be on Monday, August 16, 2010 from 6:00-8:00 p.m. Parents and students can bring their school supplies with them and meet their child's teacher.



## PRESCHOOL

Preschool will be beginning on Thursday, August 19th. Mrs. Hendershot will be contacting parents to let them know which students will be enrolled. Preschool Orientation will be held on August 16<sup>th</sup> at 6 p.m. in the elementary library.

### ELEMENTARY WatchDOGS Program

We will continue the WatchDOGS program at Fordland Elementary during the 2010-2011 school year. WatchDOGS(Dads of Great Students) is a safe school initiative of the National Center for Fathering that involves fathers and father figures to help create a more safe and secure learning environment in our nation's schools. Who are WatchDOGS? They are fathers, grandfathers, step-fathers, uncles, and other father figures who volunteer to serve at least one day each year at the participating school. (This is pending a background check) Check out [www.fathers.com](http://www.fathers.com) for more general information about the program. In addition, more information about the Fordland Elementary Program will be sent home with students in August.



### Parent Portal

The Fordland R-III School District Parent Portal is open Kindergarten through 12<sup>th</sup> Grade. The Parent Portal is an online tool you can use to view your students grades, attendance, discipline, and graded assignments. It will help you and your student stay aware of their accomplishments as well as their needs.

If you signed up last year you are already to go for the 2010-2011 school year. If not, to sign up for the Parent Portal is quick and easy! Stop by the office of the building your child is enrolled in and fill out a request form. You will need a picture ID so that we can make sure the information goes to the right person. Once filled out, a get started packet will be mailed to you.

You can access the Parent Portal from any Internet capable computer, at any time of day. If you do not have Internet capabilities at home, please feel free to use the Webster County Library Outreach computers, which are available Tuesday and Thursday evenings from 3-8pm in the high school library. Please remember that this access is for your use only. Each parent or guardian may have their own log-on and password if they so choose. If your log-on/password is lost or needs to be reset you will be required to show your photo ID and fill out a new request form. These measures are put into place with each child's safety in mind.

Thank you for your assistance and patience as we utilize this new step towards positive communication in the Fordland R-III School District. If you have questions about the new Parent Portal, I am available by email at [kdjacks@fordland.k12.mo.us](mailto:kdjacks@fordland.k12.mo.us) or you may reach Krista Jackson by phone in the high school library at 417-767-4555.

### CHARACTERplus

CHARACTERplus is a comprehensive process involving everyone in Fordland. This includes all students, staff, parents, businesses, patrons, and etc. Each month we will highlight one of eight character words. If you would like to be a part of this new exciting process whether that be posting the Character Word of the Month at your local business or hanging up signs students have created to promote the character word. These character words will be included in the classroom, lesson plans, school assemblies, at ballgames, and throughout the curriculum to promote awareness of the importance and benefits of good character. The school and community through a voting process at all three buildings chose the following words for the Fordland Community. If you would like to help in any way please call one of the building offices.

August/September	<b>Respect-</b> To show consideration for the feelings and rights of yourself, others, their belongings, and the world around you.
October	<b>Patience-</b> The ability to wait calmly for something to happen without complaining or giving up.
November	<b>Sportsmanship-</b> Following the rules, respecting others, and showing a positive attitude in all activities.
December	<b>Responsibility-</b> Doing what is expected and holding yourself accountable for your choices.
January	<b>Courage-</b> The ability to face danger, fear, and difficult situations with confidence.
February	<b>Self-Control-</b> Displaying emotions and behaviors appropriately in all situations.
March	<b>Self-Esteem-</b> Believing in yourself as person without needing the approval of others.
April	<b>Integrity-</b> Doing what is right in every situation.
May	<b>Wrap up all words</b>





### School reach –

We will be using the “School Reach” calling system again this year. This will notify you during school cancellations and special events throughout the year. In order for this to be effective it is crucial all contact information is turned in and updated as it changes throughout the school year.



Please continue collecting “**Box Tops for Education**” coupons. Let’s make 2010-11 a record year! General Mills has added 20 new products that carry the coupons. Money earned from the collection of these coupons can be used by the school to purchase items, such as playground equipment. You can learn more about the program, and about the products that carry the coupons at: [www.boxtops4education.com](http://www.boxtops4education.com).

### MIDDLE/HIGH SCHOOL DRESS CODE

**Reminder:** Tank tops must have at least 2-inch straps. **NO SPAGHETTI STRAP SHIRTS!** Shorts and Skirts must reach the bottom of your fingertips. In addition, no visible holes should be above the fingertips. Shirts must have a seam down the side. Shirts and Jeans must meet. No belly buttons showing. If your child’s attire does not meet dress code they will be sent home. **If in doubt don’t wear it!**

### ATHLETES

All middle school and high school athletes must have a current (within a year) physical in order to participate in athletics at Fordland Schools. In addition, all students must provide proof of insurance on the physical. This documentation must be on file at school before students will be allowed to practice. Both Missouri State High School Athletics Association (MSHSAA) and local policy require these guidelines.

In addition-Athletes must maintain a C- average and pass a minimum of 5 credits per semester.



### STUDENT PICTURES

Lifetouch Portrait will make individual student pictures for K-12 on Wednesday, September 23, 2010, beginning at 8:30 a.m. Pre-pay envelopes will be sent home with all students prior to that date listing price information. **Make your checks payable to Lifetouch Portrait.** PRESCHOOL children will be invited to have pictures taken later in the year.

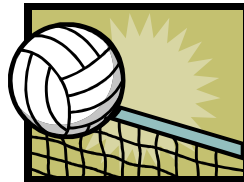


### PHYSICAL EDUCATION

We would like to request that middle school and high school students, which participate in physical education, not wear their street shoes on the gym floor. Please help us in keeping our newly sanded floor in top condition. Lockers and locks are available to students to keep extra shoes in, if they so choose.

### CROSS-COUNTRY

The first official practice for the 2010 cross-country season will be Monday, August 9<sup>th</sup>. Summer practices will run from 7:00 a.m. to 8:30 a.m. Cross-country is open to high school and 7<sup>th</sup> or 8<sup>th</sup> grade boys and girls. Need to bring update physical form to first practice. Any athlete having questions may contact Coach Bertoldie by phone at 859-3266.



### Volleyball

Any girls interested in playing High School volleyball, Try-outs/ Practice starts August 9<sup>th</sup> at 3 pm - 5 pm. You must have a physical to play. Any questions call Coach Maher at 417-838-4799 or [cjkerans@mnu.edu](mailto:cjkerans@mnu.edu) .



### Band

High School Band Camp  
August 2-6  
9-11am

Beginning Band Instrument Rental Night  
September 2

HS Band Parade  
Seymour Apple Festival  
September 11



## FFA

It has been a busy summer for the FFA, with the July 4<sup>th</sup> celebration at the City Park, our annual canoe trip and preparing for the upcoming school year. First I would like to thank everyone that helped and supported the kids at our food booth at the park for the July 4<sup>th</sup> celebration. It was a huge success. For our annual canoe trip 30 students attended. We floated the North Fork River, from Hammond Camp to just below Blair Bridge, which was approx. 12 miles. The kids had a blast and enjoyed the Blue Spring and of course flipping each other's canoes. The officers have been busy, attending an officer workshop in Branson on July 20<sup>th</sup>, and preparing for the annual officer retreat. The officer retreat is where the officers prepare for the upcoming year and activities. Once again I would like to thank community for their continued support of the Agriculture program and look forward to working with you in the 2010-2011 school year. As always, if you have any questions contact the Agriculture Department at 417-767-4555 ext 115.



## Blueberry Project

Wow, what an experience! We never knew that there was so much to know about blueberries and how healthful and beneficial that they are. We have completed Phase 1 of our project, planting 90 blueberry plants. We had two work days in June to finish planting our plants. Thank you to the wonderful and very excited group of kids that are involved in this project that are now known as the "Blueberry Patch Kids". These kids have shown a great deal of interest in the project, which was made possible through a grant from the Missouri Foundation of Health, in partnership with the Fordland Clinic and Community Foundation of the Ozarks. On June 15<sup>th</sup>, we visited the Waters Blueberry farm in Smithville, MO, which is where our plants came from. While there we were walked through the planting, growing, and harvesting process that they use on the farm. We were amazed to see and hear that they currently had approximately 140,000 plants at the farm. Please stop by sometime and see us as our project grows. We would be happy to show you around and answer any questions you might have. Thank you, Mr. Scrivner



## STUDENT HANDBOOK

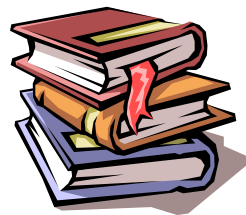
**The Disciplinary Policy has been revised at each building level. The variances from the previous policies will be effective during the 2010-11 school year. Please make a special attempt to review these updates in each student handbook. The Handbooks will be posted on our website at [www.fordland.k12.mo.us](http://www.fordland.k12.mo.us).**

## NEW FACES

We will have some new faces to welcome and work with this school year. **High School-** Mrs. Disseler – Communication Arts **Middle School** –Mrs. Taylor – Science, Mrs. Wilsford – Communication Arts and H.S. Cheerleader Coach **Elementary School-** Ms. Tracy Owens Kindergarten , Mrs. Celene Brooks 4<sup>th</sup> Grade, Mrs. Callie Maher 4<sup>th</sup> Grade and Head Volleyball Coach, Mrs. Alesha Franklin 5<sup>th</sup> Grade, Mrs. Mary Provance – Resource, Mrs. Amanda King, Personal Aide, Mrs. Marie Galloway Personal Aide, Mrs. Elaine Kindall Personal Aide

## KITCHEN WASTE BIDS

Sealed bids for waste from both school kitchens will be accepted through 3:00 p.m. on August 13, 2010. Bids may be mailed or dropped off at the superintendent's office.



## HIGH SCHOOL /WEBSTER COUNTY LIBRARY

Webster County Library books and services for children through adults are available at Fordland High School. You can check out from the Fordland/Webster County collection, order books or return books from any Webster County Library to the high school. The hours are **Tuesdays and Thursdays**, year-round, from 3:00 to 8:00 p.m. Preschool learning bags, Internet and other services are also available. Please take advantage of this partnership, as you can receive your library card on the same day you apply.



**FORDLAND R-III SCHOOL DISTRICT  
PUBLIC NOTICE INDIVIDUAL WITH  
DISABILITIES EDUCATION ACT (IDEA)**

All responsible public agencies are required to locate, evaluate, and identify children with disabilities who are under the jurisdiction of the agency, regardless of the severity of the disability, including children attending private schools, highly mobile children, such as migrant and homeless children, and children who are suspected of having a disability and in need of special education even though they are advancing from grade to grade. The Fordland R-III School District assures that it will provide a free, appropriate public education (FAPE) to all eligible children with disabilities between the ages of 3 and 21 under its jurisdiction. Disabilities include autism, deaf/blindness, emotional disorders, hearing impairment and deafness, mental retardation, multiple disabilities, orthopedic impairment, other health impairments, specific learning disabilities, speech or language impairment, traumatic brain injury, visual impairment/blindness and young child with developmental delay.

The Fordland R-III School District assures that it will provide information and referral services necessary to assist the State in implementation of early intervention services for infants and toddlers eligible for the Missouri first Steps program.

The Fordland R-III School District assures that personally identifiable information collected, used, or maintained by agency for the purposes of identification, evaluation, placement or provision of FAPE of children with disabilities may be inspected and/or reviewed by their parents/guardians. Parents/guardians may request amendment to the educational record if the parent/guardian believes the record is inaccurate, misleading, or violates the privacy or other rights of their child. Parents have the right to file complaints with the U.S. Department of Education or the Missouri Department of Elementary and Secondary Educational Rights and Privacy Act (FERPA).

The Fordland R-III School District has developed a Local Compliance Plan for the implementation of State Regulations for the Individuals with Disabilities Education Act (IDEA). This plan contains the agency's policies and procedures regarding storage, disclosure to third parties, retention and destruction of personally identifiable information and the agency's assurances that services are provided in compliance with the General Education Provision Act (GEPA). This plan may be reviewed Monday-Friday, from 8:30 a.m. to 3:00 p.m. in the Fordland Central Office.

Local school districts in the State of Missouri are required to conduct an annual census of all children with disabilities from birth to age twenty-one (21) that reside in the district. This census must be complied by December 1 of each year. This information is treated as confidential and must include: name of child; parent/legal guardian's name/address; birth date and age of the child; the child's disability; and the services provided to the child. If you have a child with a disability or know of a child with a disability who is not attending the public school, please contact Dyke Hurd, Special Education Coordinator, (417) 767-4555.

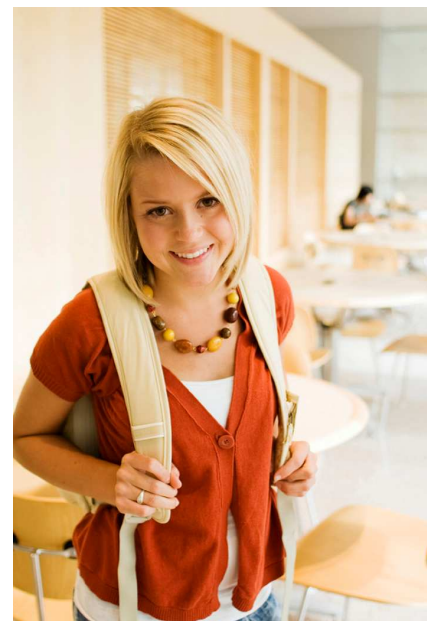
This notice will be provided in native languages as appropriate.

**Individuals with Disabilities Education Act (IDEA)**

The Fordland R-III School District ensures that provision will be made for the participation of students with disabilities that are parentally-placed in private, parochial or home schools in the program assisted or carried out under Part B of the Individuals with Disabilities Education Act (IDEA) by providing them with special education and/or related services.

The Fordland R-III School District also ensures that a services plan will be developed and implemented for each child, parentally-placed in private, parochial or home schools, who has been designated to receive special education and/or related services. An expenditure of funds equivalent to the proportionate share calculation will be used to fund this provision of services.

The Fordland R-III School District invites consultation with the appropriate representatives of private/parochial/home-schooled children with disabilities regarding such funding. To arrange consultations contact the Superintendent's office. ♦





### CLOSING

Hello everyone:

My name is Richard Spacek and I would like to take this opportunity to introduce myself to you as Superintendent of Schools for the Fordland R-III District. My wife of 33 years Mrs. Donna Jeanne and I are in the process of moving into your district and community and have received a warm welcome from everyone we have met so far. We have three adult children and 4 and ½ grandsons (our middle daughter is expecting our fifth).

Donna and I have always enjoyed active lives and being involved in our church, school, and communities. We horseback on trails and show, camp, and enjoy water sports, basically anywhere you can hear kids laughing and having fun you will find us.

That is enough about us, now about your kids and their education. I absolutely believe that all kids can and must learn. Each child is an individual and in the midst of educating the masses we must acknowledge and address the needs of each student. “The raising of our children really does require the whole village”. Formal education is only a part of raising productive adult community members, but it is the part for which your Board of Education has place the responsibility with me. For the educational process to work effectively each of the three main groups (students, parents/community, and the school) must clearly understand and carry out their responsibilities. All three must understand and embrace the vision of educating every child to a level that will help each achieve to the level of God given talent and ability.

I am committed to doing all that I possibly can to help Fordland Schools meet our responsibilities to you and your children, but we cannot do it without your help and support. From the history of this district I know you have always been there for the kids so let us work together to find ways to better prepare them to pursue their future.

Sincerely,

Richard D. Spacek  
Superintendent

### CALENDAR OF EVENTS

- |       |          |  |
|-------|----------|--|
| Aug.  | 16       | Elementary Orientation 6-8 p.m.  |
|       | 19       | First Day of School  |
|       | 23       | Softball at Mt. Grove at- 4:30 p.m.  |
| Sept. | 2        | Baseball here against Conway -4:30 p.m.<br>Volleyball at Billings  |
|       | 3        | <b>Dismiss School at 12:30 p.m.</b><br><b>(Elementary dismiss at 12:15 p.m.)</b><br>Baseball at Dora-4:30 p.m.   |
|       | 4        | Cross-Country at Strafford   |
|       | <b>6</b> | <b>NO SCHOOL (LABOR DAY)</b>   |
|       | 7        | Volleyball at Sparta   |
|       | 9        | Volleyball here against Pleasant Hope<br>Baseball here against Forsyth -4:30 p.m.  |
|       | 10       | Baseball at Galena-4:30 p.m.<br>Softball at Springfield Cental -4:30 p.m.  |
|       | 11       | Volleyball Touney at Forsyth   |
|       | 13       | <b>Dismiss School at 12:30 p.m.</b><br><b>(Elementary dismiss at 12:15 p.m.)</b><br>Baseball at Seymour -4:30 p.m.<br>Softball at Ava -4:30 p.m.                   |
|       | 14       | Cross-Country at Monett<br>Middle School Basketball at Seymour<br>Volleyball here against Conway   |
|       | 16       | Volleyball at Plato<br>Baseball here against Stoutland- 4:30   |
|       | 20       | Middle School Basketball at Gaineville<br>Volleyball here against Ava<br>Baseball here against Crane -4:30 p.m.  |
|       | 21       | Cross-Country at Nixa<br>Baseball at Norwood 4:30 p.m.   |
|       | 23       | Individual Student Pictures 8:30 a.m.<br>Volleyball at New Covenant<br>Middle School Cross-Country at Nixa   |
|       | 24       | Volleyball at Niangua  |
|       | 25       | Volleyball Tourney at Everton  |
|       | 27       | <b>Dismiss at 2:00 p.m. PLC</b><br><b>(Elementary dismiss at 1:45 p.m.)</b><br>Baseball at Mansfield -4:30 p.m.<br>Middle School Basketball here against Hartville |
|       | 28       | Volleyball at Springfield Catholic<br>Baseball here against Sparta- 4:30 p.m.  |
|       | 29       | Middle School Cross-Country at Marshfield  |
|       | 30       | Volleyball here against Forsyth<br>Baseball here against Clever -4:30 p.m.<br>Middle School Basketball at Mansfield  |
| Oct.  | 1        | Baseball at Hartville -4:30 p.m.<br>Softball at Lutie- 4:30 p.m.   |

STUDENTS

Discipline

Student Cell Phone Usage

FILE: JFCAB

Critical

Developments in cell phone technology in recent years have resulted in enhanced communication opportunities. However, the use of cell phones in schools poses increasing risks of school disruptions, bullying, criminal activity, and academic dishonesty. As a result, student cell phones will be banned during the instructional day **(beginning at 8 a.m. and through 3:30 p.m.)**, as well as, in dressing areas during extracurricular activities. Violation of this policy **will result in the cell phone being confiscated, as the parent/guardian must come to school to retrieve the cell phone.** Second offenses will again result in the aforementioned statement, **but students will receive a minimum of one (1) day of in-school-suspension. Beginning with the 2008-09 school year, students will receive a minimum of one (1) day of in-school-suspension on the first and subsequent offenses.**

Parents may apply to the building principal to obtain a hardship exception. In such cases, the student's cell phone must be retained in the principal's office. Students granted a hardship may visit the office to use their cell phone for approved purposes. Each school's phones are also available for parents to contact their child for legitimate reasons.

\*\*\*\*\*

**Note: *The reader is encouraged to check the index located at the beginning of this section for other pertinent policies and to review administrative procedures and/or firms for related information.***

Adopted: February 21, 2008  
Fordland R-III School District, Fordland, Missouri

**Dear Parents and Employees:**

On October 22, 1986, President Reagan signed into law the Asbestos Hazard Emergency Response Act (AHERA, Public Law 99-519). The law required EPA to develop regulations, which provide a comprehensive framework for addressing asbestos problems in public and private elementary and secondary schools. On October 30, 1987, EPA published the asbestos-Containing materials in Schools Rule [40 CFR Part 763 Subpart E]. This

New Rule requires all public and private elementary and secondary schools to inspect for friable and non-friable asbestos, develop asbestos management plans that address asbestos hazards in school buildings, and implement response actions in a timely fashion. This rule became effective December 14, 1987.

Fordland R-III School District conducted a complete inspection of its facilities in 2009, utilizing the services of AHERA Specialists. The results of this inspection have been included in a management plan. This management plan is available in the Superintendent's office of the District during normal business hours, without cost or restriction, or the disturbance of the ACM are also recorded in the management plan.

Inspection by representatives of the EPA and the State, the public including teachers, other school personnel and their representatives, and parents. The District may charge a reasonable cost to make copies of management plans. Periodic surveillance is required every six- (6) months and was conducted on April 6, 2009. A reinspection of our facilities is required every three- (3) years and was conducted on April 3, 2008. Any fiber release episodes and any activities involving you, as a parent, are encouraged to examine the management plan that affects your child(ren).

Fordland R-III School District  
1230 School Street  
Fordland MO 65652

NON-PROFIT  
ORGANIZATION  
US POSTAGE PAID  
PERMIT NO 1  
FORDLAND MO 65652

BOXHOLDER

Fordland R-III Supply List  
2009-2010

**Kindergarten Supply**

1 box of tissues  
1 pair of scissors  
1 box 8 crayons (regular size)  
1 medium or large size Elmer's White Glue (no paste please)  
1 backpack or school bag (no rolling please)  
1 box of watercolor paints  
1 large erasers  
2 large regular size pencils  
1 school box (cigar size-no larger)  
1 two pocket plastic folder  
1 cloth type rest mat (braided rugs or large beach towels- NO PLASTIC MATS OR PILLOWS, please)  
PLEASE PUT YOUR CHILD'S NAME ON ALL SUPPLIES!

**Appreciated but not required:**

1 large pkg. wet wipes  
Many of these items will have to be replenished when the need arises. Your child's teacher will inform you of this.

**First Grade**

1 pkg. #2 pencils  
2 large pink erasers  
4 glue sticks  
1 pair of scissors (Fiskars are the best.)  
1 box 24 count crayons  
1 box tissues  
2 folders with brads (the kind with the little brass fasteners inside)  
1 heavy folder without brads (no plastic folders please)  
1 pkg. markers (no colored pencils please)  
1 soft zippered supply box  
1 backpack  
Tennis shoes for PE (no backless shoes)

**Appreciated but not required:**

1 pkg. dry erase markers  
1 container Clorox cleaning wipes  
Many of these items will have to be replenished when the need arises. Your child's teacher will inform you of this.

**2<sup>nd</sup> Grade**

(2) 2 pocket folders  
1 pair of student-safe scissors  
1 ruler (inch and centimeters)  
1 box tissues  
1 box crayons  
1 bottle of liquid glue  
1 pkg. of No. 2 pencils  
1 art supply box

**Appreciated but not required items:**

Hand sanitizer  
1 pkg. wet wipes  
Washable markers  
Loose leaf wide ruled paper  
Tape  
Sticky Notes  
1 pkg. dry erase markers

**3rd Grade**

1 small school box  
1 box crayons  
1 pink eraser  
1 pkg. colored pencils  
One ruler 12 inch (centimeters and inches)  
glue sticks  
1 blue pen  
3 spiral notebooks  
Scissors  
1 box No. 2 pencils  
1 pkg. WIDE rule paper  
5 folders  
1 box tissue

**Appreciated but not required items:**

1 container of Clorox wipes, 1 bottle of hand sanitizer, small pkg. of letter size file folders, 1pkg. of multiplication cards, 1 pkg. construction paper, 1 pkg. wet wipes.

**4<sup>th</sup> Grade**

Art supply box  
Scissors  
24 crayons  
12 #2 pencils – NO mechanical pencils please  
Glue (glue sticks work best)  
1 pkg. red checking pens  
2 one-subject spiral notebooks (wide-ruled)  
1 box tissues  
1 fine point black Sharpie for Art  
3 folders with pockets  
3 packs of loose leaf paper  
1 highlighter (optional)  
2 inch 3-ring binder  
\*Art supplies do not need to be duplicated for Art.

**Appreciated but not required items:**

1 container of Clorox wipes  
1 box envelopes  
Sticky notes (3 x 3 any color)  
1 pkg. dry erase markers

**5<sup>th</sup> Grade Supply**

1 art box  
1 box crayons  
1 pkg. markers  
1 pkg. colored pencils  
One ruler (metric and inches)  
3 glue sticks  
1 protractor  
1 pair of scissors  
1 box No. 2 pencils  
1 pkg. colored checking pencils (no blue or black please)  
1 pkg. loose leaf paper  
6 plain folders with pockets and clasps (please send one of each: red, blue, green, yellow, purple, orange)  
1 box tissue  
1 pkg. 5 dividers with tabs  
1 pkg. yellow legal pads

**Appreciated but not required items:**

antibacterial wipes, 1 pkg. dry erase markers.  
colored sharpies, envelopes